

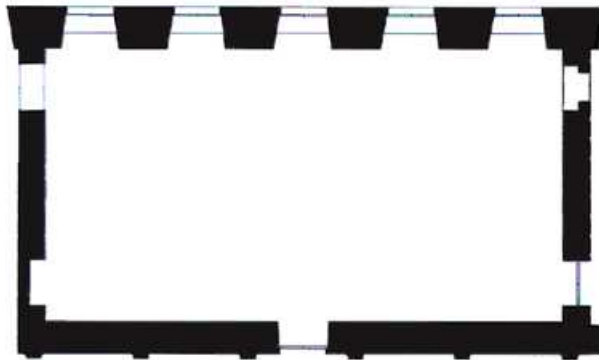
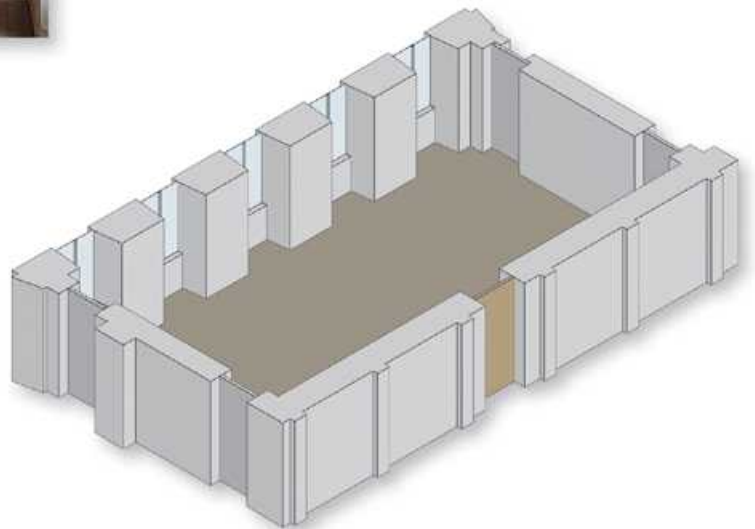
Monks' Refectory



The Monks' Refectory, a splendid C18th hall, is located to the south of the Abbey, so the temperature is always very pleasant and if that was not the case, the wood stove dating back to 1709 undertakes to create a unique atmosphere. The many stucco decorations and the magnificent wooden flooring are also from the same period.

Possible activities

Concerts, seminars, cocktail parties, meals, press conferences, product launch parties ...



Specific features

- Outstanding acoustics.
- Possibility of combining arrangements with the cloister garden, the cloister and the cellars.
- Accessible to the disabled.
- Floor : C18th wooden flooring.
- Walls : C18th stuccoes.
- Heating : wood stove from 1709.
- Lighting : natural light
central crystal chandelier
indirect lighting
- Electricity : 2 x 200-V sockets

Theatre style	Schoolroom tables	Horseshoe tables	Closed horseshoe	Banquet	Reception	Ceiling height	Length	Width	Area
220	120	110	60	180	330	4m	17,7m	9,37m	166m ²