

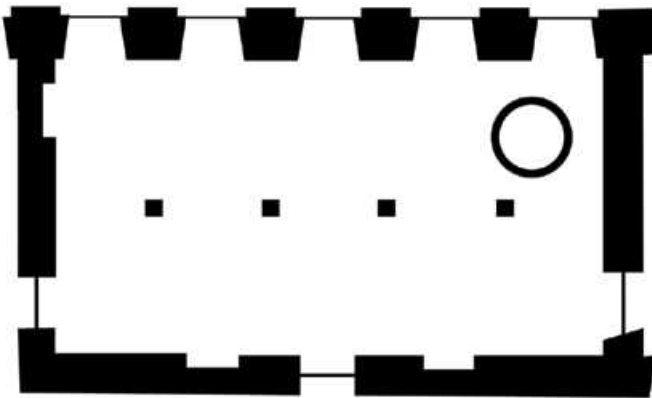
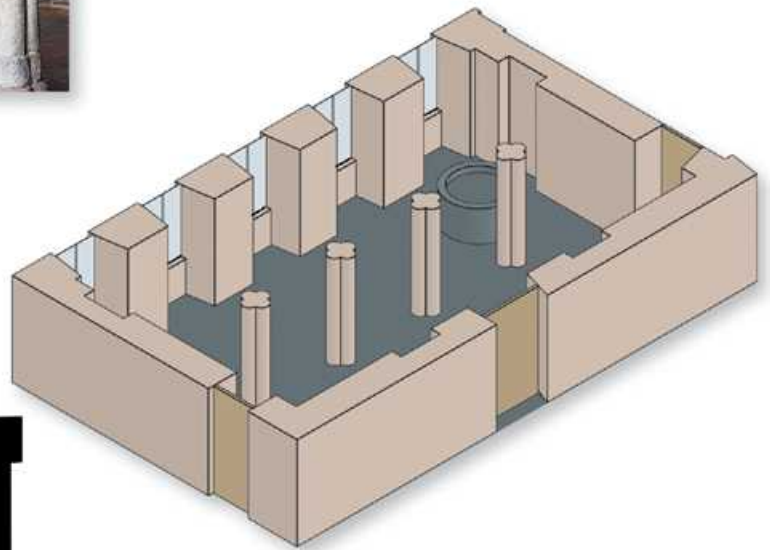
Guards' Room



This magnificent room is located in the basement but benefits from a very ample supply of daylight. It is still possible to admire one of the old wells of the Abbey in these vaulted and very pleasant surroundings. It offers an opportunity to combine arrangements with the Racetrack Museum.

Possible activities

Ideal for concerts, cocktail parties, meals, dances ...



Specific features

- Completely vaulted area.
- 4 columns in the centre of the area.
- An old well is located in the room.
- Accessible to the disabled.
- Floor : natural flagstones.
- Walls : painted and coated bricks.
- Heating : radiators.
- Lighting : natural lighting
direct and indirect lighting
- Electricity : 3 x 220-V sockets
2 x 32-A sockets

| Theatre style | Schoolroom tables | Horseshoe tables | Closed horseshoe | Banquet | Reception | Ceiling height | Length | Width | Area |
|---------------|-------------------|------------------|------------------|---------|-----------|----------------|--------|-------|-------------------|
| 100 | 70 | - | - | 150 | 290 | 3,50m | 17,2m | 9,23m | 146m ² |